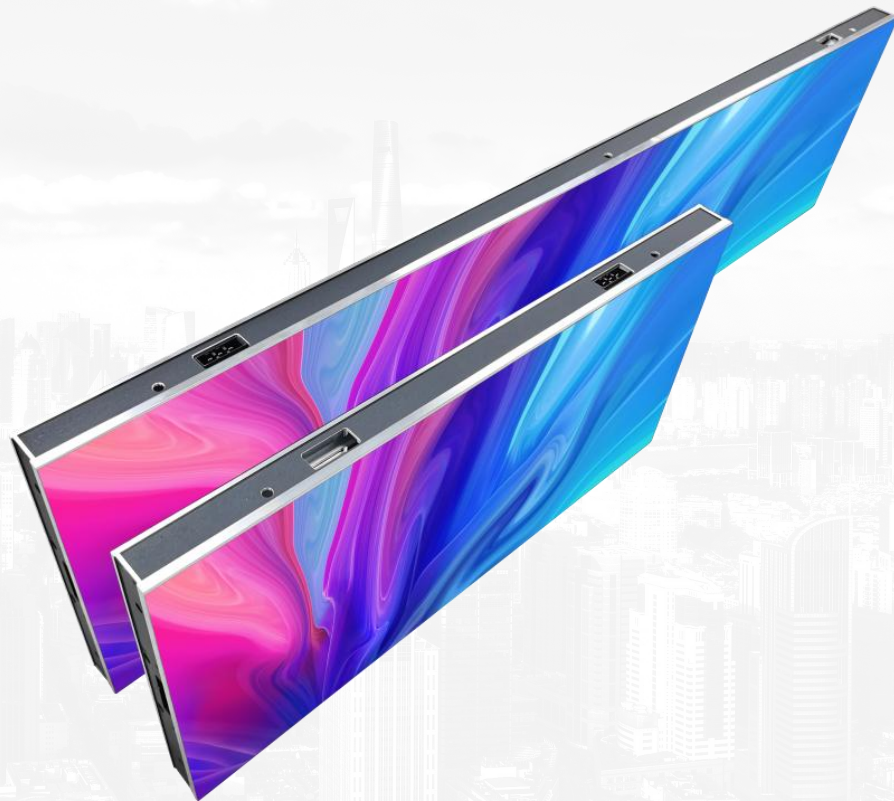




JYLED

JYH Series

Product Brochure



500X250X33mm



750X250X33mm



1000X250X33mm



Rear view

Side view

Front view

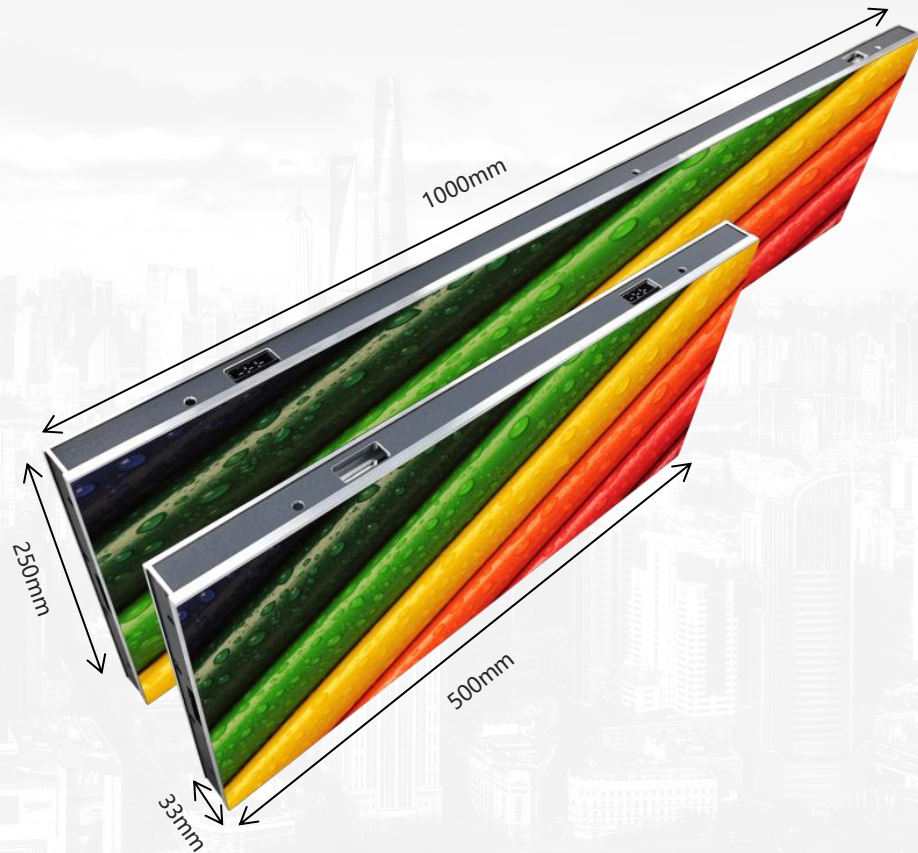


Cabinet Dimension

1000X250X33mm
750X250X33mm
500X250X33mm

Light Weight

5.8kg/4.4kg/2.9kg



The logo for JYLED, featuring the brand name in a bold, blue, sans-serif font. The letter 'Y' is stylized with a green and blue geometric shape integrated into its upper part. The background of the slide includes a cityscape and decorative circles in the top left corner.

- ◎ Thickness :33mm
- ◎ Weight:5.8kg/2.9kg
- ◎ Full front access, easy for maintenance
- ◎ Wireless connection, more stable
- ◎ High contrast



Structure

- ◎ Aluminum material frame
- ◎ High precision, high strength
- ◎ Perfect heat dissipation
- ◎ 33mm thickness



Innovation design



Front access service



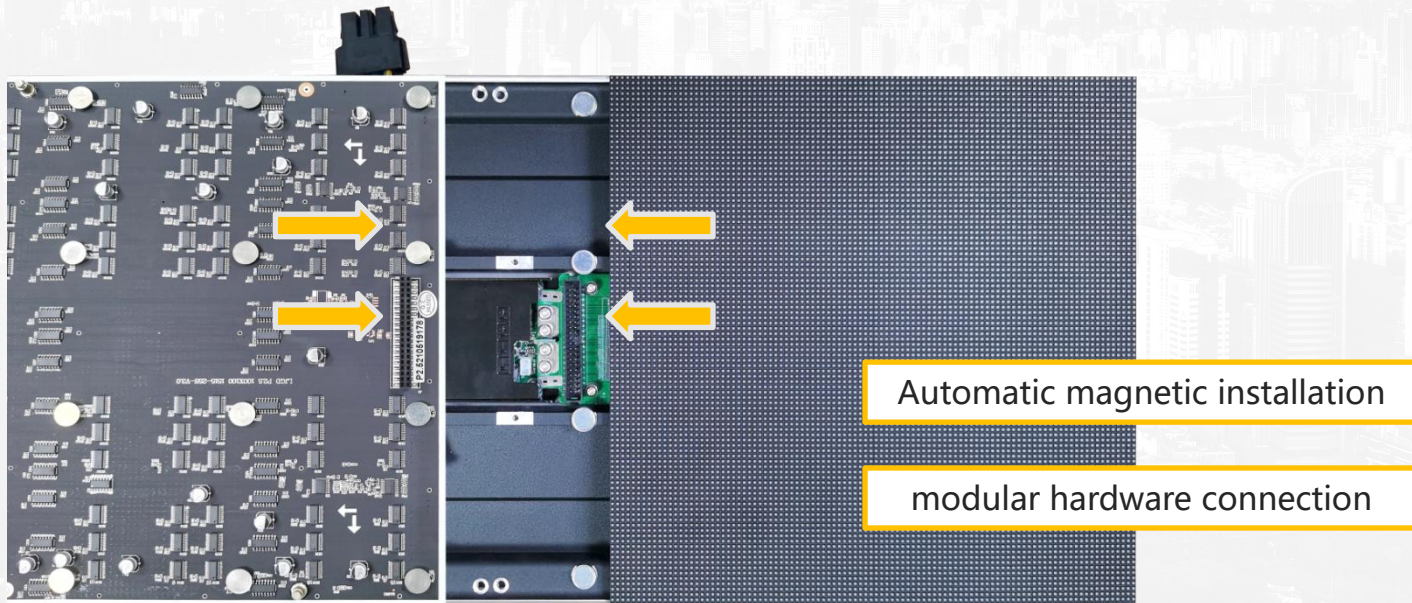
Safety connection



Power connector

Hot swapping • wireless connection

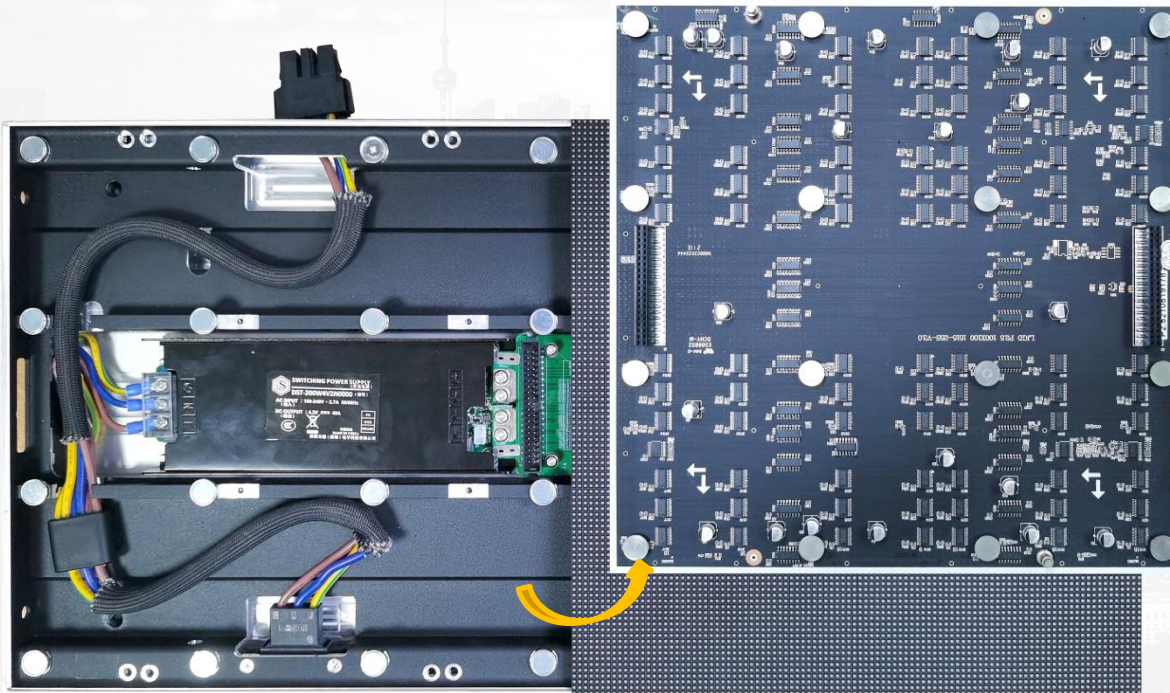
- Modules adopt HUB connection, safer signal transmission.
- The hot swapping technology is a key point that achieves the continuous operation and uninterrupted maintenance.



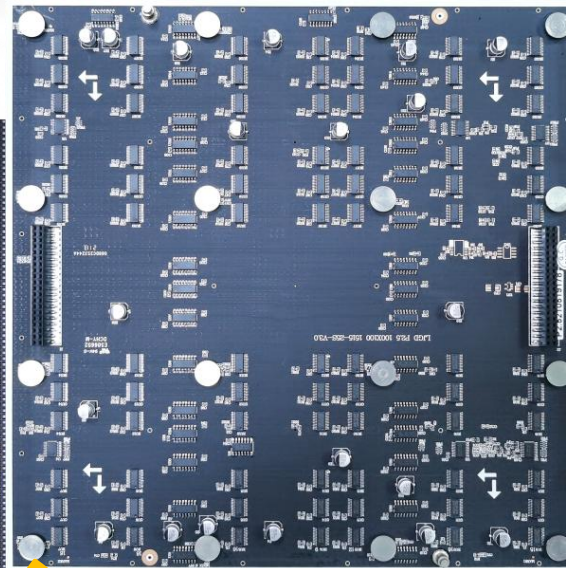


- Ultra-thin thickness, but roomy interior.
- Standardized design, wide applications.

Tidiness



Simpleness



JYLED



Performance



High refresh rate

Low refresh rate

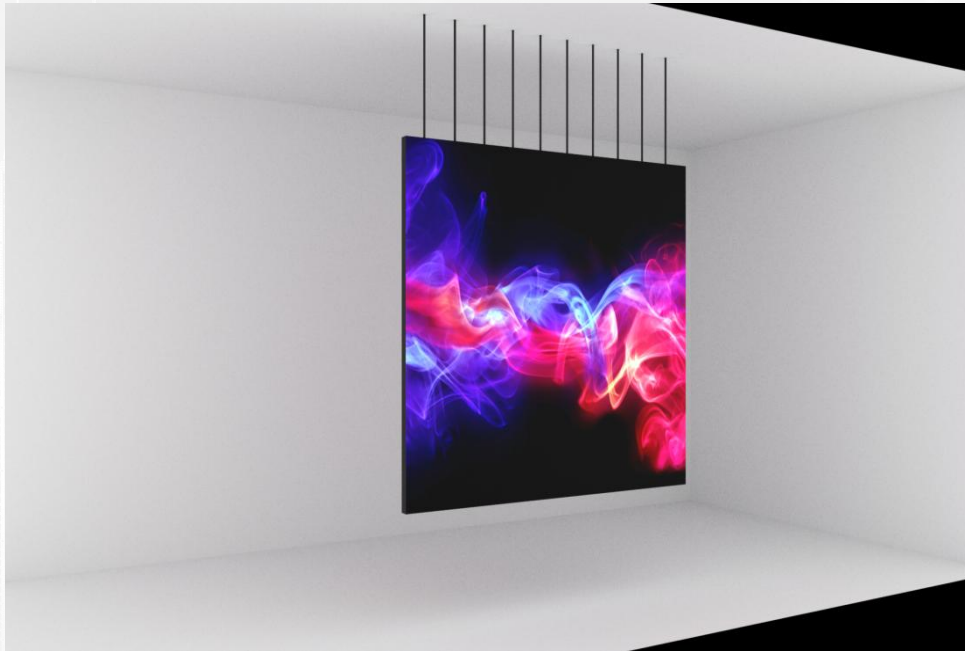


Fixed Installation





JYLED



Applications

LED SCREEN SYSTEM CONNECTION DRAW



The logo for JYLED, featuring the letters 'JYLED' in a bold, blue, sans-serif font. The letter 'Y' is stylized with a diagonal line through it. The logo is centered within a yellow rounded rectangular background.

JYLED

Please visit our website for more details

www.szjy-led.com