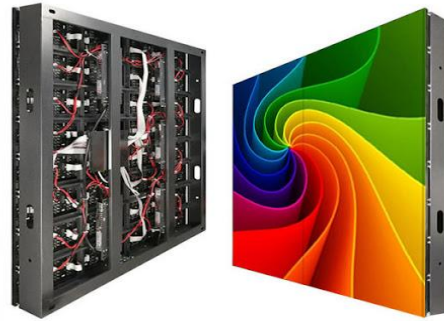


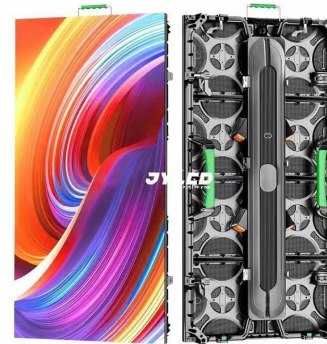
## Indoor Fixed LED Display

### Key Features

- Ultra-HD Display
- Easy to Install and Dismantle
- Wide Viewing Angle
- Energy Saving & Environmental Protection



Standard Iron Cabinet  
(960\*960mm)



Standard Aluminum Cabinet  
(500\*1000mm)



Installed in shopping mall



Installed in the hall

Get more information & quotes

Web: [www.szjy-led.com](http://www.szjy-led.com)

Email: [sale20@sz-ledscreen.com](mailto:sale20@sz-ledscreen.com)

Mobile: +86 18194008750

## Specification

## Custom Models & Sizes



Installed in meeting room

Recommended Models			
Model	P2.5	P3	P4
Module size(mm)	320x160	192x192	320x160
Module resolution (dot)	128x64	64x64	80x40
Scanning	1/32S	1/16S	1/20S
SMD	1G1R1B		
Maintenance	Front	Front/Back	Front/Back
Installation	Front/Back	Front/Back	Front/Back
Cabinet size(mm)	960x960	960x960	960x960
Density(dot/m <sup>2</sup> )	160000	111111	62500
Brightness(cd/m <sup>2</sup> )	800-1200		
Max. Power Consumption(W)	600	1000	900
Average Power Consumption(W)	200	350	300
Cabinet weight (kg)	18kg		
Cabinet material	Iron		
IP rate	IP 31		
Grayscale	10000:1		
Refresh rate(hz)	1920-3840		
Frame change frequency	50/60hz		
Horizontal viewing angle	> 140°		
Vertical viewing angle	> 140°		
Best viewing distance	> 2.5m	> 3m	> 4m
Input Voltage	AC110V - AC220V		
Module Max. current	4.0-5.0	4.5-5.5	5.5-7.5
Temperature-operating	- 10°C ~ 60°C		
Humidity-operating	10% ~ 90%		
Life span (H)	≥100,000		

Get more information & quotes

Web: [www.szjy-led.com](http://www.szjy-led.com)

Email: [sale20@sz-ledscreen.com](mailto:sale20@sz-ledscreen.com)

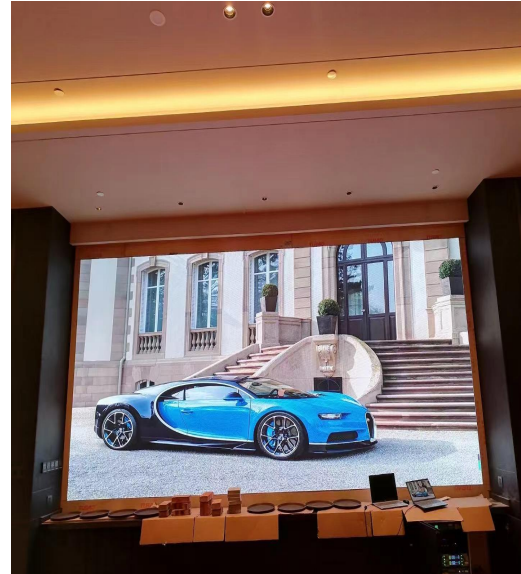
Mobile: +86 18194008750

## Indoor Fixed LED Display

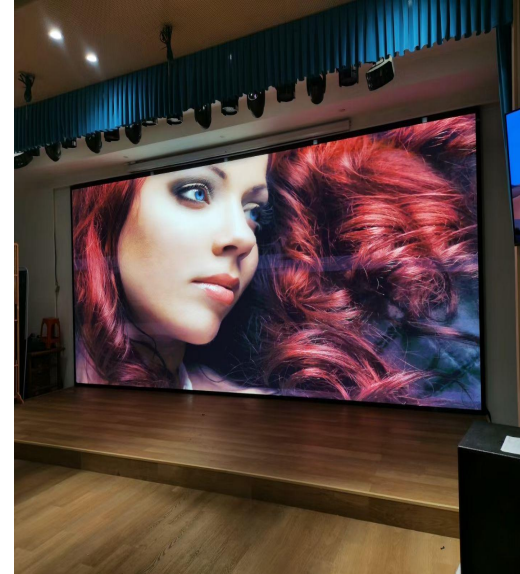
### Product Cases



Installed for wall decoration



Installed in conference room



Installed for indoor stage

Get more information & quotes

Web: [www.szjy-led.com](http://www.szjy-led.com)

Email: [sale20@sz-ledscreen.com](mailto:sale20@sz-ledscreen.com)

Mobile: +86 18194008750